

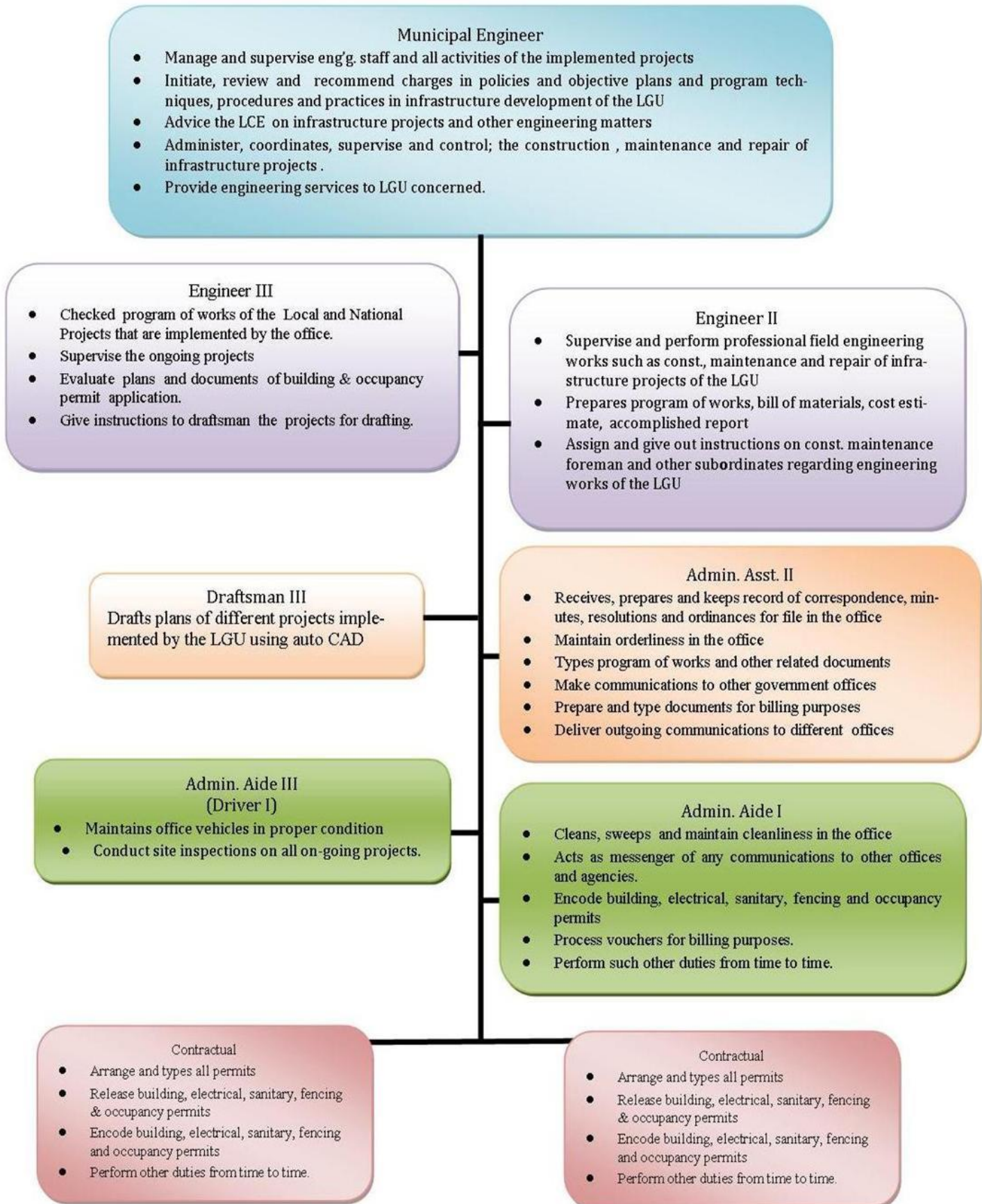
## Office Functions:

The engineer shall take charge of the engineering office and shall:

- ✚ Initiates, reviews and recommends changes in policies and objectives, plans and programs, techniques, procedures and practices in infrastructure development and public works in general of the local government unit concerned;
- ✚ Advises the governor or mayor, as the case may be, on infrastructure, public works, and other engineering matters;
- ✚ Administers, coordinates, supervises, and controls the construction, maintenance, improvement, and repair of roads, bridges, and other engineering and public works projects of the local government unit concerned;
- ✚ Provides engineering services to the local government unit concerned, including investigation and survey, engineering designs, feasibility studies, and project management;
- ✚ In the case of the provincial engineer, exercises technical supervision over all engineering offices of component cities and municipalities; and
- ✚ Exercises such other powers and perform such other duties and functions as may be prescribed by law or ordinance.

# FUNCTIONAL CHART

## OFFICE OF THE MUNICIPAL ENGINEER



**POSITIONAL CHART  
OFFICE OF THE MUNICIPAL ENGINEER**

